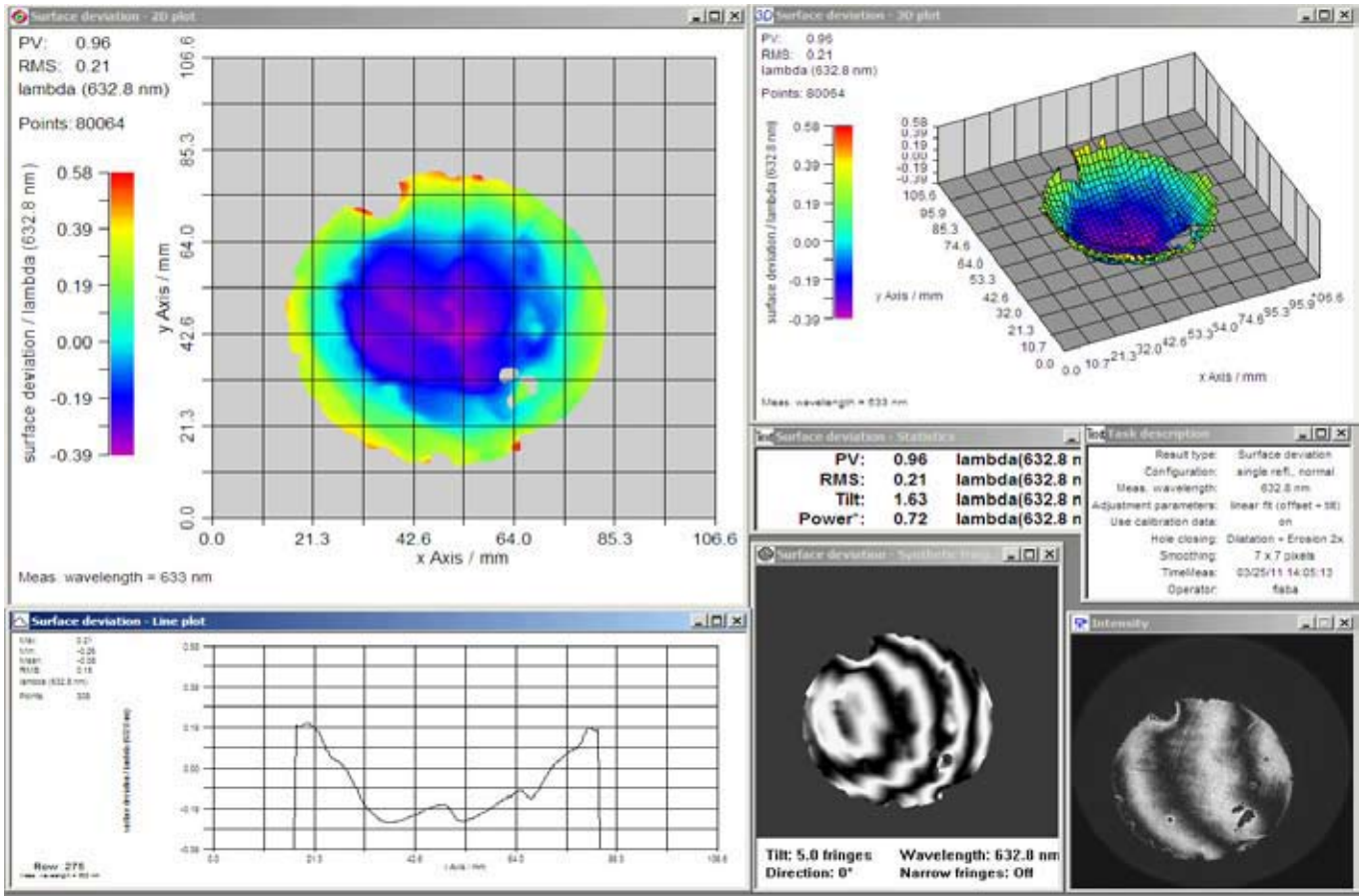


BEFORE REPAIR

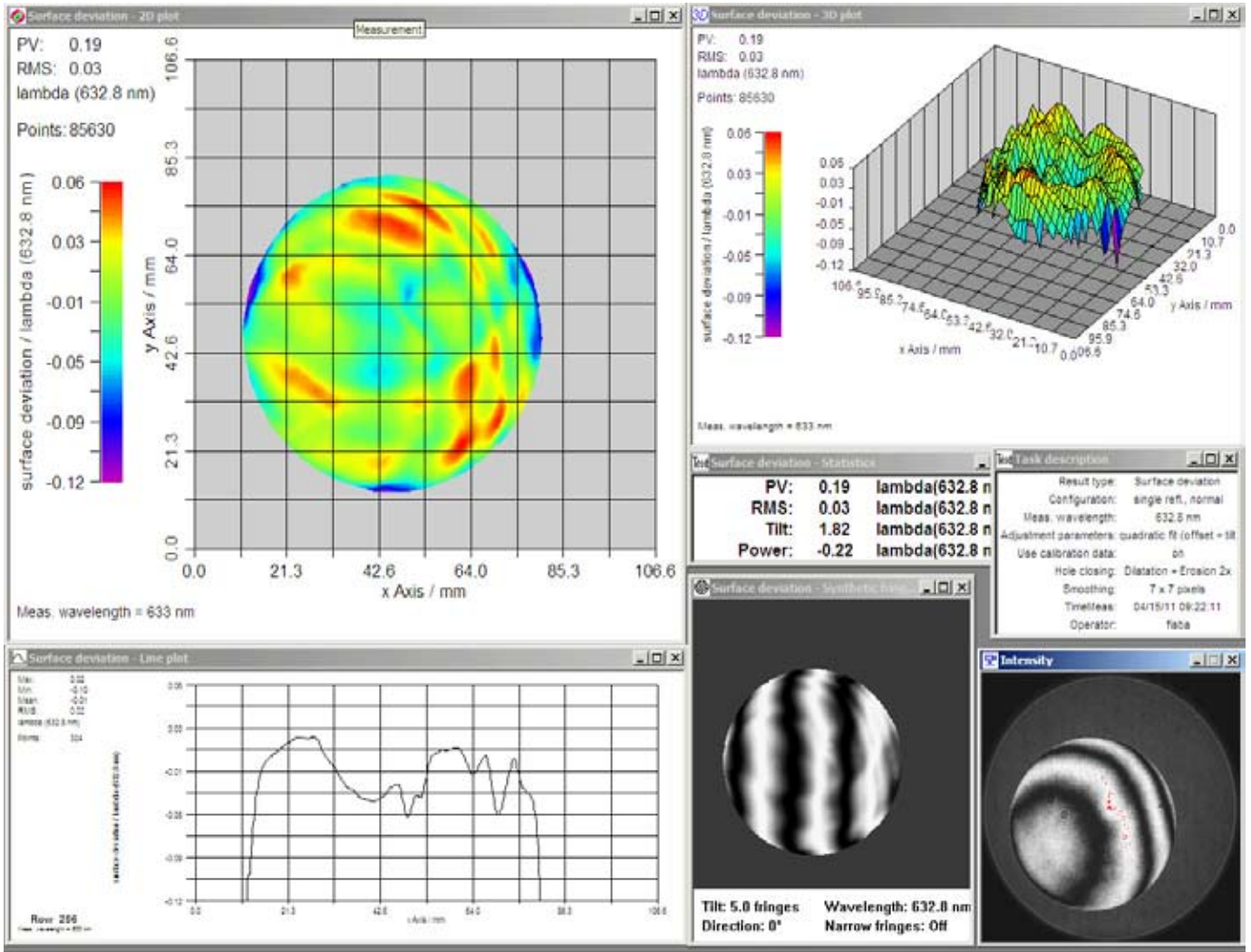


(c) FISBA OPTIK St. Gallen / Berlin

Laser Beam Products

This was a 75mm diameter 25mm thick Copper mirror used on a Trumpf welding system. This shows the mirror as received with dents and bulges from handling, mounting and unmounting the mirror during its lifetime.

AFTER REPAIR



(c) FISBA OPTIK St. Gallen / Berlin

Laser Beam Products

After repair the flatness is 150 nm and all the dents and bulges that were on the mirror have been removed, to give a smooth flat surface.